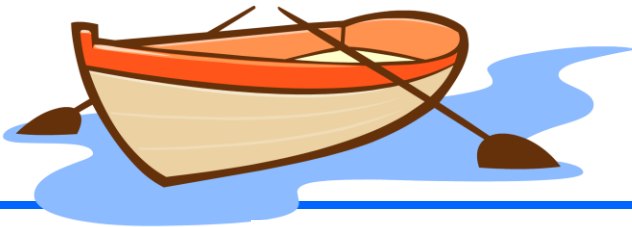


Open Gov Data and You: Trying Your Hand at Open Government Health Care Data

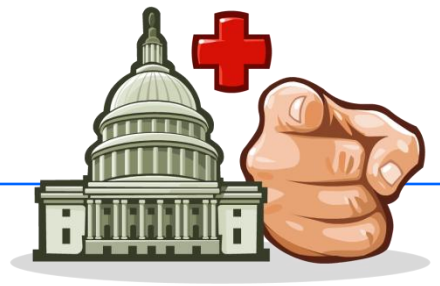


RowdMap



All contents are proprietary to RowdMap, Inc. and are being provided on a confidential basis.
Any use, reproduction or distribution of this information, in whole or in part, or the disclosure of any of its contents
without the prior written consent of the Company, is prohibited.

TRY YOUR HAND AT GOV DATA

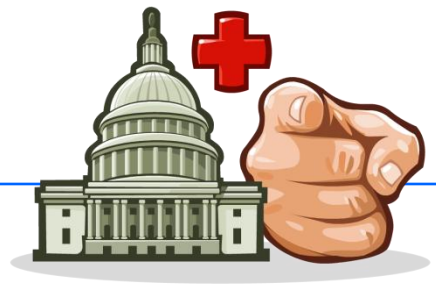


RowdMap uses government data for things like identifying the most risk-ready doctors and matching them with the right arrangements.

But you can use this data for all sorts of things... here's a quick starter guide to try your hand.



TRY YOUR HAND AT GOV DATA



Places to Start:

[Referrals: <http://1.usa.gov/1FzoEOV>]

[Variation: <http://go.cms.gov/1D8j7LE>]

[Shared Savings: <http://go.cms.gov/1Hh8vx0>]

[Medicare FFS Part B: <http://go.cms.gov/OCmyoy>]

[Medicare FFS Part D: <http://bit.ly/1mGyBxk>]

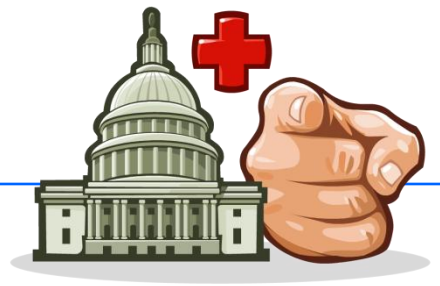
[Medicaid: <http://go.cms.gov/1z7b5ic>]

[Dartmouth: <http://bit.ly/1GXvIjp>]

[Behaviors: <http://1.usa.gov/1PzcisT>]

[Health Data All Stars: <http://bit.ly/1GAsVC3>]

TRY YOUR HAND AT GOV DATA



Helps to get started:

Before data products, tools, widgets, benchmarks, APIs, systems...

Before access and security; before interoperability, standards...

Before automation and efficiency...



Taxonomy

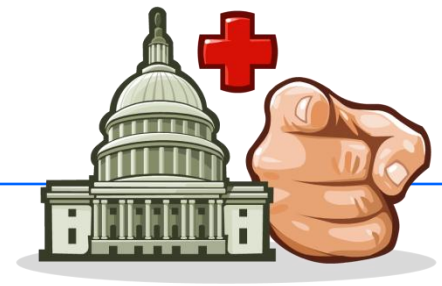
... basis for moving to new paradigm from fee-for-service to pay for value

... bridges business & technology/data... bridges internal & external users

... across CMS... identifiable beneficiary databases and non-beneficiary files



TRY YOUR HAND AT GOV DATA



Example Taxonomy

<http://www.medicare.gov/download/downloaddb.asp>

← → ↻ 🏠 🌐 www.medicare.gov/download/downloaddb.asp

You have the option of downloading the data used in the search and compare tools onto your computer. This option is for researchers and the media. You should not download the databases if you are simply trying to find out what is available through the Search Tools as they are on the website.

Please note that the downloadable databases are available as zipped Microsoft Access databases and also in CSV (Comma Separated Value) databases. In order to use the downloadable databases, you must have a working knowledge of Microsoft Access.

If you wish to download this data, please realize that downloading may take some time (10-30 minutes, depending on the size of the data). These databases are updated on a monthly basis (and sometimes more frequently).

Hardware and Software Requirements

To use this download file, you need at least the following:

- A 486 or Pentium processor is recommended.
- Hard drive with 20 megabytes of free disk space.
- 8 megabytes of RAM (random-access memory). 16 megabytes is recommended.
- Windows 98
- PKUNZIP or WinZip. This file is a PKZIP compressed file.

Which database would you like to download?

2011 Plans Information by County (Part 1) ▾

Continue

All contents are proprietary to RowdMap, Inc. and are being provided on a confidential basis.

Any use, reproduction or distribution of this information, in whole or in part, or the disclosure of any of its contents without the prior written consent of the Company, is prohibited.

RowdMap



TRY YOUR HAND AT GOV DATA



Example Taxonomy

ContractNum	PlanID	SegmentID	ContractYear	OrgName	PlanName	SPPlanName	GeoName	TaxStatusCd	TaxStatusDes
"E5088"	801	0	2011	Deseret Mutual	Deseret Secure (Employer PFFS)		National Area	2	Non-Profit

SPTaxStatusDesc	PlanType	PlanTypeDesc	CvrgGapOfrd	CvrgGapInd	CvrgGapDesc	ContractImportantNote	SPContract
Sin Ganancias	40	Employer/Union Only Direct Contract PFFS	FALSE	0	No Gap Coverage		

WebAddress	PartDWbAdrL	FmlyrWbstAdr	PhrmcyWbstAdr	FedApprovalStatus	SPFedApprovalStatus	POSAvailFlag	MailOrderAvail
www.dmba.com				Approved by Medicare	Aprobado por Medicare	FALSE	FALSE

PlanImportantNote	SPPlanImportantNote	SegmentImportantNote	SPSegmentImportantNote	LegalEntityName	TradeName
				DESERET HEALTHCARE EMPLOYEE BENEFITS TRUST	

NetworkEnglish	NetworkSpanish
1001-1500 physicians and providers.	1001-1500 médicos y proveedores.

MAPDIndicator	PPOPDIndicator	SNPID	SNPDesc	SPSNPDesc	Lis100	Lis75	Lis50	Lis25	RegionalIndicator	CountyFIPSCode
TRUE	FALSE	0	Not SNP	No hay planes para necesidades especiales					FALSE	1001

Sample record from the downloaded file



What is this? How can I use it to answer business questions?



TRY YOUR HAND AT GOV DATA



Example Taxonomy

ContractNum	PlanID	SegmentID	ContractYear	OrgName	PlanName	SPPlanName	GeoName	TaxStatusCd	TaxStatusDesc
"E5088"	801	0	2011	Deseret Mutual	Deseret Secure (Employer PFFS)		National Area	2	Non-Profit

SPTaxStatusDesc	PlanType	PlanTypeDesc	CvrgGapDfrd	CvrgGapInd	CvrgGapDesc	ContractImportantNote	SPContract
Sin Ganancias	40	Employer/Union Only Direct Contract PFFS	FALSE	0	No Gap Coverage		

WebAddress	PartDWbAddr	FrmlyrlyWbstAdr	PhrmcyWbstAdr	FedApprovalStatus	SPFedApprovalStatus	POSAvailFlag	MailOrderAvail
www.dmba.com				Approved by Medicare	Aprobado por Medicare	FALSE	FALSE

PlanImportantNote	SPPlanImportantNote	SegmentImportantNote	SPSegmentImportantNote	LegalEntityName	TradeName
				DESERET HEALTHCARE EMPLOYEE BENEFITS TRUST	

NetworkEnglish	NetworkSpanish
1001-1500 physicians and providers.	1001-1500 médicos y proveedores.

MAPDIndicator	PPOPDIndicator	SNPID	SNPDesc	SPSNPDesc	Lis100	Lis75	Lis50	Lis25	RegionalIndicator	CountyFIPSCode
TRUE	FALSE	0	Not SNP	No hay planes para necesidades especiales					FALSE	1001

What do the data individual data elements describe? Is MAPDIndicator an attribute of a plan or contract or both?

How are Contract, Org, Plan, Legal Entity related to each other?

RowdMap



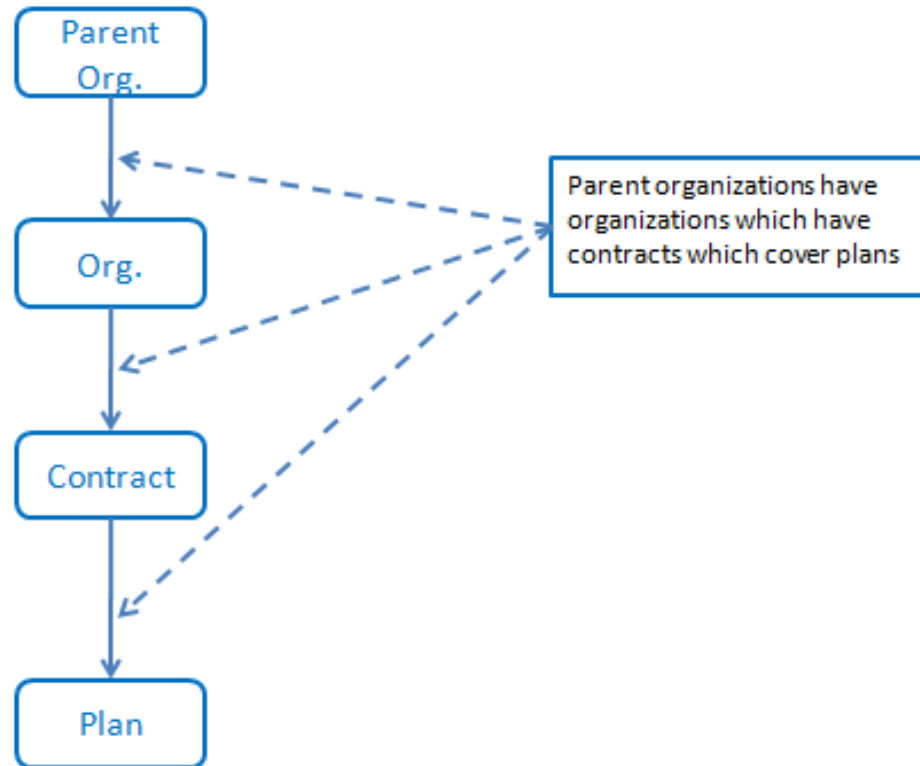
In order to get insight, I need the data in a meaningful business structure!

Contents

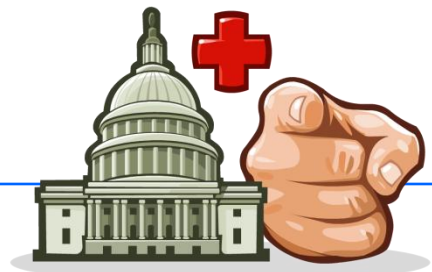
TRY YOUR HAND AT GOV DATA



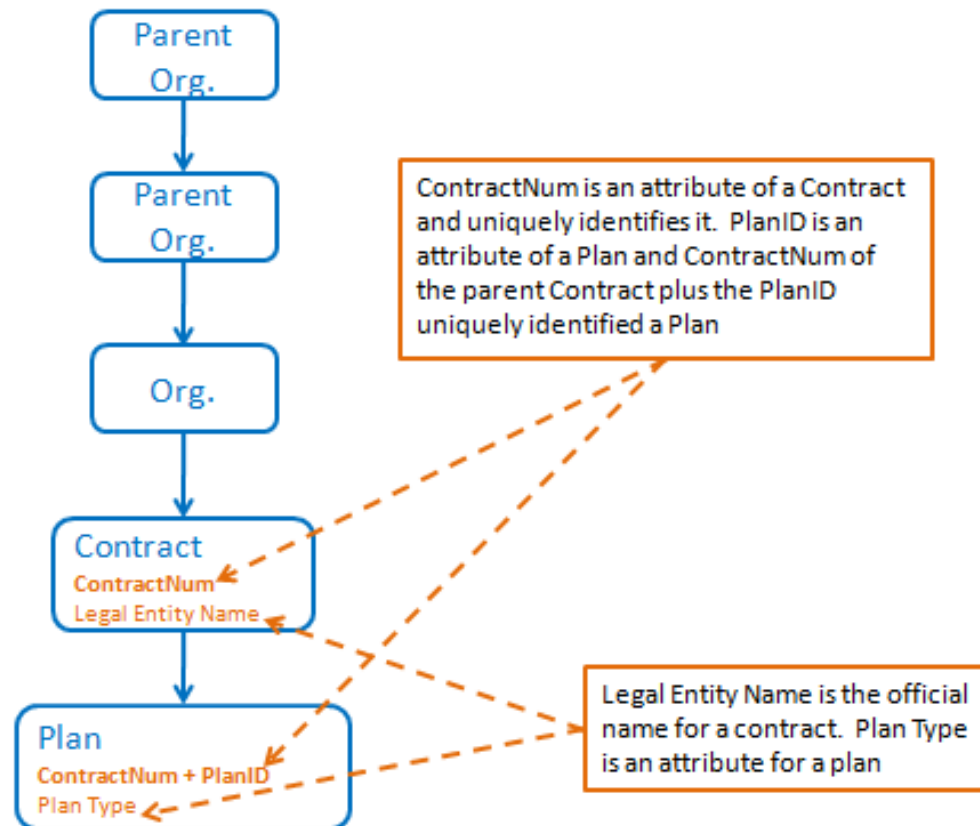
Taxonomy defines business entities and the relationships among them



TRY YOUR HAND AT GOV DATA



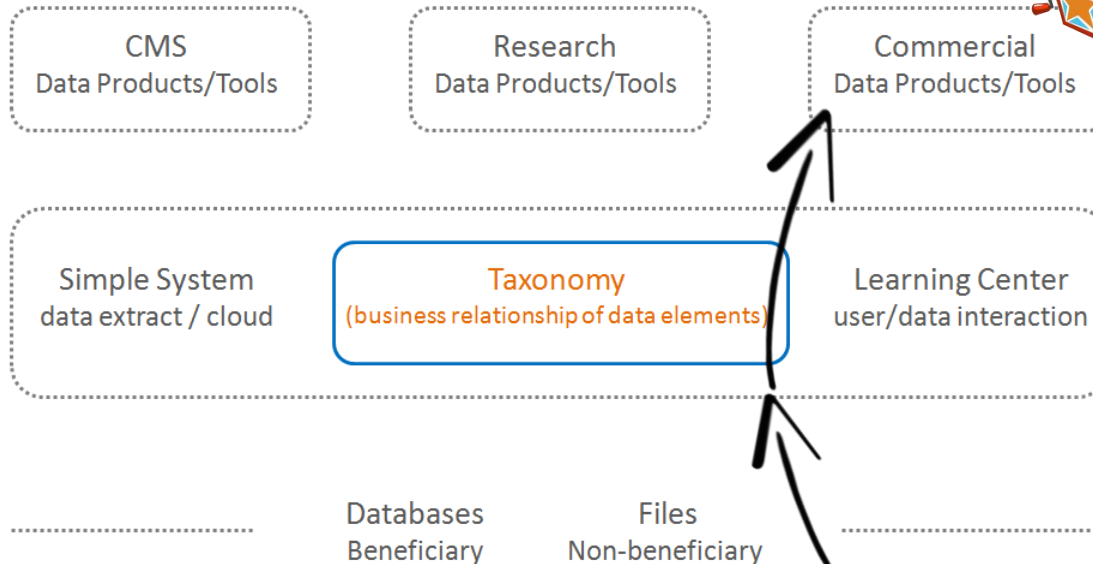
Taxonomy defines attributes for business entities



TRY YOUR HAND AT GOV DATA



Taxonomy at the center of any system



If you want to do something meaningful
with the data, go through taxonomy

RowdMap



All contents are proprietary to Rowdmap, inc. and are being provided on a confidential basis.

Any use, reproduction or distribution of this information, in whole or in part, or the disclosure of any of its contents without the prior written consent of the Company, is prohibited.